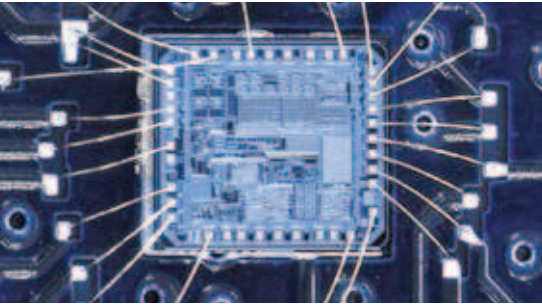


# CONTRINEX - A WORLD OF SENSORS



**OWN ASICS**  
**TECHNOLOGY LEADER**  
**SOLUTION PARTNER**

## At a glance

- ✓ Technology leading manufacturer of inductive and photoelectric sensors as well as Safety and RFID systems
- ✓ World market leader for miniature sensors, sensors with long operating distances and devices for particularly demanding operating conditions (all-metal, high-pressure and high-temperature resistant sensors)
- ✓ Represented in over 60 countries worldwide, headquarters in Switzerland
- ✓ 14 own subsidiaries in all major markets
- ✓ More than 500 employees worldwide
- ✓ 8000 products



*Contrinex Headquarters, Switzerland*

## GLOBAL EXPERIENCE, LOCAL SUPPORT

### Production

Contrinex manufactures its own sensors, safety and RFID systems in 4 production locations: Switzerland (since 1972), Hungary (since 1995), China (since 2003) and Brazil (since 2009).



*Contrinex Hungary - new factory inaugurated in 2013*

## PHOTOELECTRIC

### THE SMALLEST ON THE MARKET

# CYLINDRICAL SUBMINIATURE

#### KEY ADVANTAGES

- ✓ Ø 4 and M5 housings for target detection in limited spaces
- ✓ Rugged metal housing
- ✓ Accurate target detection due to cylindrical light beam
- ✓ Rugged sapphire glass or glass sensing face, scratch and chemically resistant
- ✓ Shock and vibration resistant due to fully vacuum potted electronics
- ✓ High system reserves (excess gain)



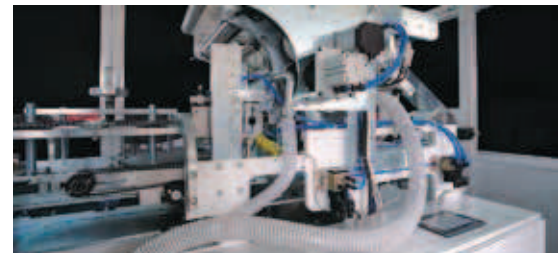
#### INDUSTRIES

Precision engineering, semiconductors, electronics, vending machines

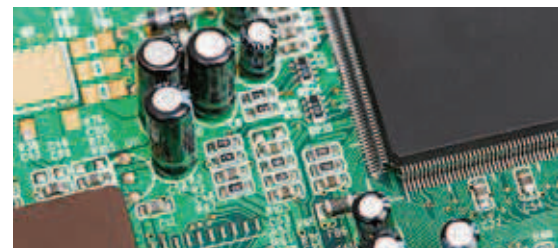
Housing size (s <sub>n</sub> mm)	Ø 4 mm	M5
Diffuse	10 ... 50	10 ... 50
Through-beam	-	250



Precision processes



Electronics



## PHOTOELECTRIC

### M12 STANDARD SIZE FOR MULTIPLE USES

# CYLINDRICAL MINIATURE

#### KEY ADVANTAGES

- ✓ M12 miniature sensor series
- ✓ Rugged metal housing
- ✓ Accurate and speed independent target detection; response time 0.5 msec (laser: 0.1 msec)
- ✓ Shock and vibration resistant due to fully vacuum potted electronics
- ✓ High system reserves (excess gain)
- ✓ Easy adjustment (due to visible red light)
- ✓ Laser sensor (protection class 2)



#### INDUSTRIES

Automotive manufacturing, machine tools, logistics, textiles, green energy, packaging, filling machines

Housing size (s <sub>n</sub> mm)	M12	M12 Laser
Diffuse	300	-
Reflex	1500	-
Through-beam	10,000	50,000



Packaging



Textiles





# SENSORS

## PHOTOELECTRIC

### M18 STANDARD SIZE, INCLUDING 90° SENSING CYLINDRICAL SMALL

#### KEY ADVANTAGES

- ✓ Small sensor M18
- ✓ Models for lateral sensing
- ✓ Rugged metal housing
- ✓ Accurate and speed-independent target detection
- ✓ Shock and vibration resistant due to fully vacuum potted electronics
- ✓ High system reserves (excess gain)
- ✓ Easy adjustment (due to visible red light)
- ✓ Laser sensor (protection class 2)



Textiles



Filling machines



#### INDUSTRIES

Automotive manufacturing, machine tools, logistics, textiles, green energy, packaging, filling machines, aerospace

Housing size (s <sub>n</sub> mm)	M18	M18W (90°)	M18 Laser
Diffuse	40 ... 600	40 ... 600	40 ... 250 / 60 ... 600
Reflex	2000	2000	-
Through-beam	20,000	20,000	50,000
Background suppression	10 ... 120	10 ... 120	-

## PHOTOELECTRIC

### 5 X 7 MM STEEL HOUSING AND NARROW FOCUS CUBIC SUBMINIATURE

#### KEY ADVANTAGES

- ✓ Cubic  $\square$  5 x 7 x 40 mm sensors
- ✓ Rugged metal housing
- ✓ Accurate target detection due to cylindrical light beam
- ✓ Rugged sapphire-glass sensing face, scratch and chemically resistant
- ✓ Shock and vibration resistant due to fully vacuum potted electronics
- ✓ High system reserves (excess gain)



Precision processes



Vending machines



#### INDUSTRIES

Precision engineering, semiconductors, electronics, vending machines

Housing size (s <sub>n</sub> mm)	$\square$ 5 x 7 x 40 mm
Diffuse	20 / 50 / 90



## PHOTOELECTRIC

# POWERFUL SENSORS IN 30 X 30 MM HOUSING CUBIC MINIATURE

### KEY ADVANTAGES

- ✓ Complete miniature sensor series  $\square$  30 x 30 x 15 mm in rugged Crastin® housings
- ✓ Shock and vibration resistant due to fully vacuum potted electronics
- ✓ Diffuse sensors with precise background suppression
- ✓ Polarizing filter (reflex sensors)
- ✓ Changeover outputs
- ✓ Analog outputs



### INDUSTRIES

Packaging, logistics, filling machines

Housing size (s <sub>n</sub> mm)	$\square$ 30 x 30 x 15 mm
Diffuse	600 / 1200
Reflex	2000 / 4000
Through-beam	6000 / 12,000
Background suppression	15 ... 200
Analog output	10 ... 100



Conveyor solutions



Logistics



## PHOTOELECTRIC

# EXCELLENT VALUE FOR DEMANDING APPLICATIONS CUBIC SMALL

### KEY ADVANTAGES

- ✓ Small sensor series for peak performance
- ✓ Shock and vibration resistant due to fully vacuum potted electronics
- ✓ Ecolab tested and approved
- ✓ Sensing face of glass or coated plastic
- ✓ Fiber-optic amplifiers (blue light and high frequency)
- ✓ Color sensor



### INDUSTRIES

Logistics, packaging, filling machines, printing, quality control, sorting processes, food and tobacco, wood processing machines

Housing size (s <sub>n</sub> mm)	$\square$ 40 x 40 x 19 mm	$\square$ 40 x 50 x 15 mm
Diffuse	2000	30 ... 1200
Reflex	6000	4000
Through-beam	15,000	50,000
Background suppression	-	30 ... 500
Color (diffuse)	-	30 ... 40



Sorting processes



Printing





# SENSORS

## PHOTOELECTRIC

### TOP QUALITY, RUGGED AND COST-EFFECTIVE CUBIC COMPACT

#### KEY ADVANTAGES

- ✓ Universal sensor series  $\square$  50 x 50 x 18 mm and  $\square$  65 x 83 x 25 mm for rough industrial applications
- ✓ Designed to cost
- ✓ AC/DC models
- ✓ Various connections possible



Packaging



Logistics



#### INDUSTRIES

Automotive manufacturing, machine tools, logistics, textiles, green energy, packaging, filling machines

Housing size (s <sub>n</sub> mm)	$\square$ 50 x 50 x 18 mm	$\square$ 65 x 83 x 25 mm
Diffuse	300 / 800	2000
Reflex	4000	6000
Through-beam	15,000	-
Background suppression	-	50 ... 1000

## PHOTOELECTRIC

### FIBER-OPTIC AMPLIFIERS, FIBERS

#### HIGHLIGHTS

- ✓ Wide range of fiber-optic amplifiers, including IO-Link
- ✓ Fiber-optic solutions for the most demanding environments
- ✓ Wide range of synthetic and glass fibers available



Robotics



Printed circuit board production



#### INDUSTRIES

Precision engineering, printed circuit board production, electronics, handling systems, vending machines, special machinery

Housing size (s <sub>n</sub> mm)	$\square$ 30 x 30 x 15 mm	$\square$ 31 x 60 x 10 mm	$\square$ 40 x 40 x 19 mm
Fiber-optic amplifier	60 / 120	200	150
Fiber-optic amplifier blue light	-	100	-
Fiber-optic amplifier IO-Link	-	200	-

