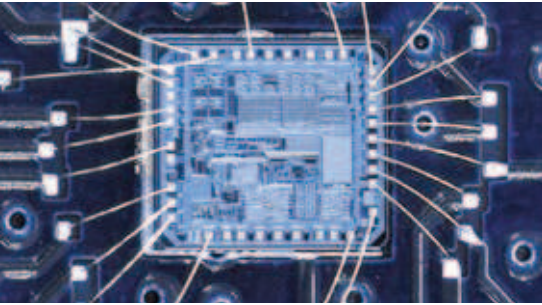


# CONTRINEX - A WORLD OF SENSORS



**OWN ASICS**  
**TECHNOLOGY LEADER**  
**SOLUTION PARTNER**

## At a glance

- ✓ Technology leading manufacturer of inductive and photoelectric sensors as well as Safety and RFID systems
- ✓ World market leader for miniature sensors, sensors with long operating distances and devices for particularly demanding operating conditions (all-metal, high-pressure and high-temperature resistant sensors)
- ✓ Represented in over 60 countries worldwide, headquarters in Switzerland
- ✓ 14 own subsidiaries in all major markets
- ✓ More than 500 employees worldwide
- ✓ 8000 products



*Contrinex Headquarters, Switzerland*

## GLOBAL EXPERIENCE, LOCAL SUPPORT

### Production

Contrinex manufactures its own sensors, safety and RFID systems in 4 production locations: Switzerland (since 1972), Hungary (since 1995), China (since 2003) and Brazil (since 2009).



*Contrinex Hungary - new factory inaugurated in 2013*

# RFID

## TOTAL TRACKING - HIGH AND LOW FREQUENCY SOLUTIONS

### HIGHLIGHTS

#### LF TECHNOLOGY FOR DIFFICULT OPERATING CONDITIONS

- ✓ Low frequency technology
- ✓ Mechanically and chemically resistant all-metal tags and read/write modules
- ✓ Tags embeddable in metal
- ✓ For operating temperatures up to +125°C (+257°F)

#### HF TECHNOLOGY (13.56 MHz)

- ✓ ISO 15693 compliant
- ✓ Networking of up to 253 read/write modules
- ✓ Net management via USB possible
- ✓ Handheld read/write devices
- ✓ Embeddable tags (even in metal)
- ✓ High temperature resistant tags up to +250°C (+482°F)



### INDUSTRIES

Automotive manufacturing, machine tools, logistics, textiles, green energy, packaging, filling machines

		Tags	Read/write modules	Interfaces
Low frequency	Plastic	✓		
	Metallic	✓		
	Plastic head		✓	
	Metallic head		✓	
	Handheld		✓	
	RS485			✓
	PROFIBUS-DP			✓
	DeviceNet			✓
	EtherNet/IP			✓
	PROFINet IO			✓
USB			✓	
High frequency	Plastic	✓		
	Embeddable	✓		
	High temperature	✓		
	Plastic head		✓	
	Handheld		✓	
	PROFIBUS-DP			✓
	DeviceNet			✓
	EtherNet/IP			✓
	PROFINet IO			✓
	EtherCAT			✓
	POWERLINK			✓
LF+HF	TCP/IP Desktop			✓
	TCP/IP Industrial			✓
	USB			✓

